

"Through the Garden Gate"

Bulletin of
The Englehart and District
Horticultural Society



MARCH 2012 GENERAL MEETING

BRUCE MURPHY WILL BE THE SPEAKER
AND HIS TOPIC WILL BE "HUMMINGBIRDS"

Wednesday, March 21st, 7:30 p.m. Pioneer Hall, Christ Church, 5th Ave
Finger foods as usual. 50/50 draw

Bruce Murphy is a favourite speaker for our group. He knows a great deal about the birds of Temiskaming and runs a bird banding station at the Hilliardton Marsh. Come out and bring a friend for an enjoyable nature evening.

Hostess: Claudette Black Gift: Carolyn Blancher



DISTRICT #12 ANNUAL MEETING: Saturday, April 28th at Porcupine? (LOCATION HAS NOT BEEN FINALIZED) We are sending two delegates, but any Member is welcome to attend. More details next month's TTGG

PLANT & BAKE SALE: The date has been moved to May 19th at the Legion Hall (upstairs) This is a reminder to save pop flats, plastic bags, etc and also to plant some extra cuttings and seeds for bedding plants to sell at the Sale. Convenor: Les Peever
Twig Baskets: Bonnie Warner intends to decorate extra baskets from the Christmas Workshop. If you have any dried or silk flowers, suitable for this, to give away, would you contact Bonnie, please at 544 8916

MEMBERSHIP: Members so far for 2012— 69 All Memberships are for the calendar year. The first three Bulletins of the new year have been sent as goodwill gesture. However, I have to tell you now this is the last Bulletin you will receive until you renew your membership. To renew, send \$10.00 with your name and address and telephone No. to Ginny Montminy, Membership Secretary, Box 952, Englehart, or see her at the next meeting.

SOCIETY YARD SALE: On Saturday, May 26th our Horticultural Society is planning as a fund raiser to hold a Yard Sale at the home of Bonnie Warner, 1st Street. If members have anything to donate, please contact either Eileen Fisher or Bonnie Warner.

Check <http://www.Englehart.weebly.com>, our Society website, for new items. Site contains links to seed companies so that seeds can be ordered online directly from the companies.

CHRISTMAS WORKSHOP: No, we're not planning it just yet, but I've been asked to mention that we would like to have donations of Red Pine, or Blue Spruce cones for use when the Workshop does come along.

A SELECTION OF REWARDING PERENNIALS TO PLANT

SIBERIAN IRIS: Of all the rewarding perennials to plant, Iris is one of the strongest and most spectacular. The tall bearded Iris are what one thinks of first and they are a glorious addition to a perennial border. There is another kind that, while showy, is not as spectacular, and that is the Siberian Iris (I have found that the similar Japanese Iris is not hardy where I garden). It quickly forms non-invasive large clumps that, either with other Siberian colours or with other mid-size plants makes a mass display in June.



Siberian Iris perform best in moist, well-drained soil. They will, however, tolerate poor soil and moderately dry growing conditions. [Soak new rhizomes (roots) in shallow water for two hours before planting.] They prefer full sunlight but will tolerate dappled light. Colours are blue, purple, dark purple, dark red, pink, yellow and white.

They bloom as I said, in June and make excellent cut flowers. Although too early for the Flower Show, sometimes the Society has had a June Mini-Show that could include Iris. Mixed with peonies, or other spring bloomers in flower designs or baskets, the Iris is a very rewarding plant to grow in the border.

WILL THE TRUE GERANIUM PLEASE STAND UP?

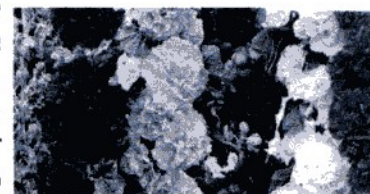
The "Geranium" we know is not a Geranium, but a "Pelargonium". Somehow over the years, the indoor plant *Pelargonium* has become known as *Geranium*. (I'm not trying to change that, I'm just explaining it) One hardy true Geranium is *Geranium X magnificentum* which has intense dark blue flowers about 1 1/4" across. It spreads very well and blooms profusely at about the same time as the Siberian Iris. Other geraniums come in other colours, such as deep and light pink

SHORTER VERSIONS MAKE A TALL IMPACT.

We are all familiar with the tall "Pacific Giant" series Delphinium.-----a dramatic tall plant for the back of the border. These are subject to wind damage if not staked or grown in a sheltered spot. There is a shorter version available called "Magic Fountain", and it's hardy in Ontario. It comes in more or less the same colours as Pacific Giant series and grows to approximately two feet. Give Delphinium lots of sun, applications of manure, and in spring, a shot of nitrogen fertilizer.

HOLLYHOCKS:

A fine old perennial, not much grown now, perhaps because of its unsightly insect damage as the summer goes on. The damage is caused by Spider Mites and Hollyhocks are, unfortunately also plagued by a disease called Rust. Both can be controlled. For Rust, which also attacks Mallow, Hibiscus and Sidalcea as well, remove any infected leaves, spray with fungicide. For Spider Mite spray with insecticidal soap mixture. Hollyhocks come in delightful bright colours and can form a height-giving backing for a perennial bed.



TTGG Mar 2012 p 3
DISTRICT 12 ANNUAL MEETING APRIL 28TH, 2012
COMPETITION SCHEDULE
April 28, 2012

Theme: "Gardening Then and Now, 1912-2012"
Prize Money in Adult Classes: 1st \$5.00 2nd \$4.00
3rd \$3.00

Design Competitions: Please note: TWO entries per person are allowed in each class.
Staging and accessories are permitted., no artificial flowers/greenery

CLASS 1: "Rocky Beginning"
An interpretive design incorporating rock(s)

CLASS 2: "Go For The Gold"
A design to celebrate the gold heritage of Timmins

CLASS 3: "Days Past"
An old fashioned design in an old fashioned container

CLASS 4: "A Little Goes A Long Way"
A small design, not to exceed 10" (25.4 cm) in any direction, fresh and/ or dried plant materials

CLASS 5: "A Walk In The Woods"
A landscape design
For definition of terms, please refer to Ontario Judging and Exhibiting Standards (Publication #34).

Photographic Print Competition
Please note: TWO entries per person are allowed in each class.

Prints must have been taken in Ontario during the past 24 months by the exhibitor.
Entries must be **COLOUR PRINTS**, size 4" x 6"(10.2 x 15.2 cm), mounts must not exceed 6" x 8" (15.2 x 20.3 cm)
Entries must not be framed.

CLASS 1: "My Favorite Flower(s)"

CLASS 2: "Splash Splash"
A waterfall (don't forget the horticultural element).

CLASS 3: "The Ancient Ones"
Old tree(s)

CLASS 4: "Whispering In The North Wind"
Grasses In winter

CLASS 5: "It's A Rocky Business"
Landscape that incorporates rock(s)

Creative Writing Competition

Please note: ONE entry per person is allowed in each class.

Class 1: "Gardening Then And Now"
Free verse

Class 2:"Gardening Then And Now, 1912-2012"
A story based on the theme

Potted Plants Competition

Please note: TWO entries per person are allowed in each class.

CLASS 1: African Violet, single crown, in bloom

CLASS 2: Plant grown principally for foliage

CLASS 3: Unusual plant, not commonly seen

CLASS 4: Plant grown principally for bloom (no African violets or orchids)

CLASS 5: Orchid, 1 plant in container

CLASS 6: Cactus, clumping, columnar or solitary growth habit

CLASS 7: Any other succulent, other than cactus

Publications Competition

Please note: All entries must be as they would be distributed to your members or the public. **One entry per Society is allowed in each class.**

CLASS 1: "2011 or 2012 Special Event Poster"

CLASS 2: "2011 or 2012 Special Event Brochure/ Pamphlet or Flyer Folded or unfolded

CLASS 3: "Society Brochure/ Pamphlet or Flyer"

CLASS 4: "Society Newsletter"

CLASS 5: "Society Show Schedule"

CLASS 6: "Society Bookmark"

APRIL GENERAL MEETING: Wednesday, April 18th. Carrie Ann Field will be the speaker and will introduce us to NEW VARIETIES FOR 2012



Aaron and Maggie Mowbray, and Ryan Warren with their trophies won in the 2011 gardening season and Flower Show

ASHES ARE GOOD FOR THE GARDEN

If you have a wood stove or fireplace you have a source for ashes, which can raise the pH of your garden soil (like lime) and besides, repel pests. They contain potassium, phosphorus and calcium, all necessary for plant growth.

Spread thinly over your garden. Where there are growing plants be especially careful of the amount as ashes can burn green plants. We spread them on the snow over the garden in winter. Until they are spread, keep ashes dry as they lose their nutrients quickly if dampness gets in them. (By the way do not use briquet ashes in compost or include it in garden ashes)

Other uses for ashes include: encircling plants with a ring of ashes away from the stem to deter soft-bodied pests; spread on icy walkways to provide traction (be sure to wipe boots well before going back into the house); or, try putting them in a crate in a place that does not get wet and see if birds come for a dust bath. Replace ashes regularly.

From Gardening Secrets, Readers' Digest 2006 (book is in Englehart Library)

PUBLISHED 11 times a year by Englehart & District Horticultural Society, Box 677, Englehart
 Editor: Jean Wallace (544-2939), Assistant: Virginia Montminy
 Mailing: Twyla Wilson (544-8024), Addresses: Rick Heaslip (544-2278)
 Printing: Courtesy Englehart & District Hospital



TGG Mar 2012 p 4

Art Competitions

Please note: TWO entries per person are allowed in each class

CLASS 1: "Old Fashion Flowers" - an acrylic or oil painting

CLASS 2: "In My Garden" - a watercolour

CLASS 3: "Memories of the Past" - a collage

CLASS 4: "On The Rocks" - painted rock, not to exceed 12"

(30.5 cm) in any direction

CLASS 5: "Farming Is....." - a seed picture

Youth Competitions

Please note: One entry per child is allowed in each class.

Classes will be grouped for judging in three different age groups.

The age groups will be : 6-8 years 9-11 years 12 years and older

Please put the child's age on the top of the entry tag.

Prize money for Youth Classes:

1st \$5.00 2nd \$4.00 3rd \$3.00 4th \$2.00 5th \$1.00

CLASS 1: "Gardening Then and Now" - A seed picture, size not to exceed 8 ½ x 11" (21.6 x 27.9 cm)

CLASS 2: "My Favourite Plant(s)" A colour Print, taken by the Exhibitor' mounted, 4 x 6" (10.2 x 15.2 cm), mounts not to exceed 6" x 8" (15.2 x 20.3 cm)

CLASS 3: "Gone Green" a flower vase or container made from re-cycled materials

NOTE re For Photo published last month, there was no caption : They are Linda Murray [behind her camera]; Virginia Montminy; Lynn Coutts; Joyce Marie Smith and, in the background, Eileen Fisher (and unknown ladies) at Dist #12 Annual Meeting in Englehart last spring.

JUNIOR GARDEN CLUB: if anyone is interested in starting a Junior Garden Club, please call Eileen Fisher